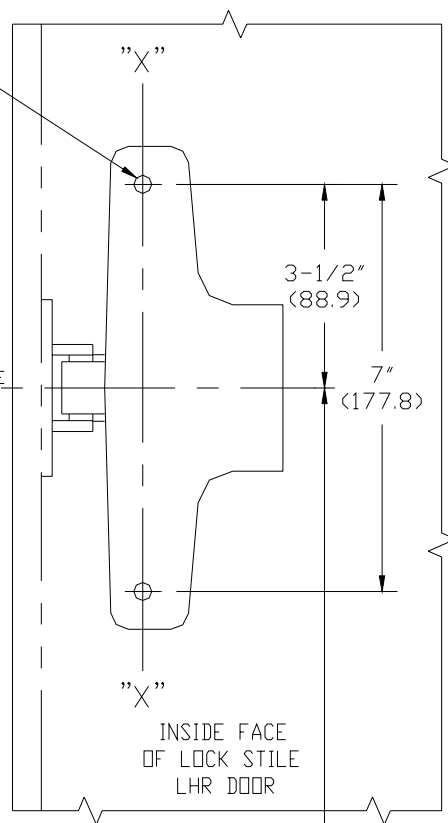


OF DEVICE



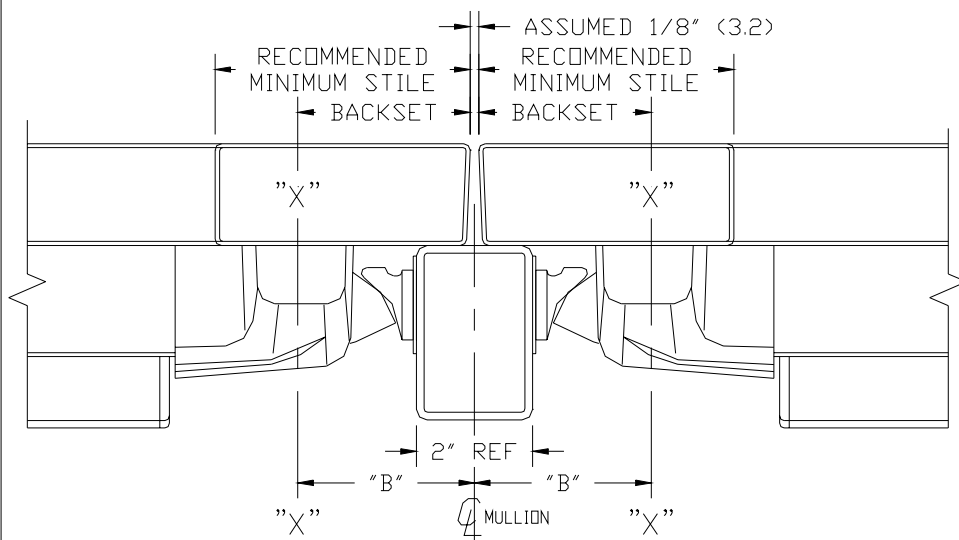
(LHR SHOWN
RHR OPPOSITE)

40" (1016) HEIGHT
(RECOMMENDED)
37" (940) MIN. HEIGHT
TO FINISHED FLOOR

SINGLE DOOR INSTALLATION				
STRIKE	DIM. "B"	BACKSET	RECOMMENDED MINIMUM STILE	
99	1-3/4" (44.5)	2-1/4" (57.2)	2-1/2" (63.5)	SHOWN
98	1-1/4" (31.8)	1-3/4" (44.5)	2" (50.8)	NOT SHOWN

NOTES:

1. DIMENSIONS SHOWN IN INCHES AND (mm)
2. ASSUME A 5/8" STOP



DOUBLE DOOR INSTALLATION WITH MULLION					
MULLION	STRIKE	DIM. "B"	BACKSET	RECOMMENDED MINIMUM STILE	
90KR & *F90KR	99	2-3/4" (69.9)	2-11/16" (68.3)	2-15/16" (74.6)	SHOWN
90KR & *F90KR	98	2-1/4" (57.1)	2-3/16" (55.6)	2-7/16" (61.9)	NOT SHOWN

*STRIKE HOOK HOLE LOCATION SHOULD BE FIELD PREPARED

HDG. _____ DR. _____

RESPONSIBILITY

Door and Frame Manufacturers are responsible for providing adequate construction or reinforcements for proper installation of hardware shown. All architectural builders hardware must be installed on properly reinforced doors and frames regardless of the type, material or method of construction.

TEMPLATE
METAL/ALUMINUM DOOR
4001 & F4001 SERIES
V4001 & FV4001 SERIES
RIM EXIT DEVICE
BP-2 MOUNTING PLATE

DETEx
CORPORATION

DO NOT SCALE DRAWING

DATE 8/9/02

TEMPLATE NUMBER T1002